

NINJA LASER

QUICK-START GUIDE



CONTENTS | PAGE

Machine Registration	1
Installing Safety Shield	2
Powering Up Machine	3
Login/Password Entry	4
Important Machine Notices	5
Cut by Decode-High Security	6-7
Cut by Code - High Security	8-10
Cut by Decode-Edge Cut	11-12
Cut by Code - Edge Cut	13-15
Favorites	16
HS Cutter Replacement	17-19
Tracer Replacement	20-21
Edge Cut Cutter Replacement	22
Software Update Instructions	23-27
Spare Parts List	28

HIGH SECURITY



EDGE CUT



*** IMPORTANT ***

REGISTERING YOUR MACHINE

Thank you for your purchase of the Keyline Ninja Laser.
Before continuing with machine setup and use, please complete the following;

COMPLETE PRODUCT REGISTRATION FORM

Complete enclosed form and fax to 216-803-0202 or e-mail to info@keyline-usa.com. This information is required to activate your warranty and inform you of software updates and new products.

KEYLINE USA PRODUCT REGISTRATION FORM

IMPORTANT

Please complete this form and fax to: 216.803.0202 or e-mail to info@keyline-usa.com so that we can register your product and activate your warranty.

Business Name _____

Customer Name _____

Address _____

City _____

State _____ Zip _____

Email _____


Product (i.e. 106, 303, Laser 994, 884) _____

Serial Number _____

Distributor Purchased From _____

What other key machines do you own?
Please list _____

Would you like added to our quarterly e-newsletter? _____

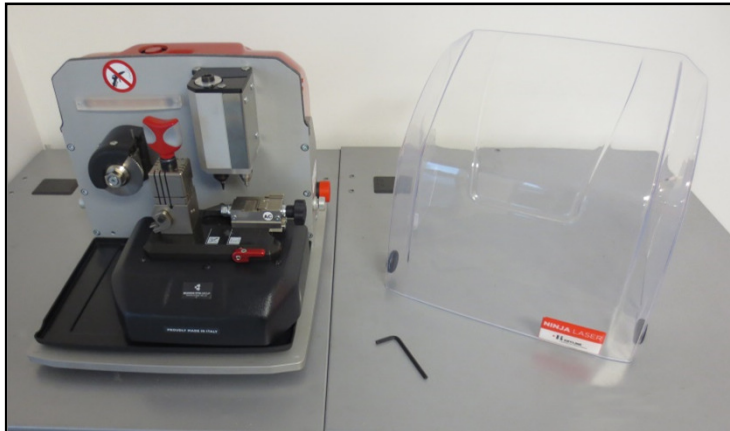


KEYLINE USA
Innovators by design | Since 1770
A BEANCO 11770 GROUP COMPANY

INSTALLING SAFETY SHIELD

2

Your Ninja Laser safety shield is shipped separate from the machine in order to protect the shield in transit. Please follow the instructions for installing the shield upon receipt before initial use.



STEP 1:

Remove the Ninja Laser and the shield from the box

Locate the 4mm allen wrench in the tool kit

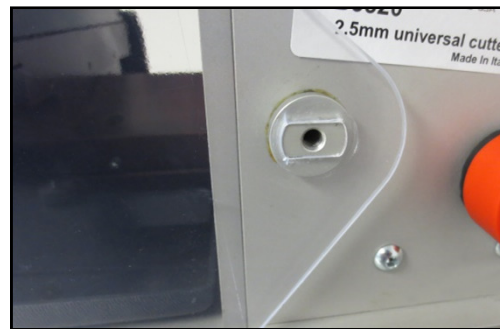
STEP 2:

Remove the screws on each side of the Ninja Laser and set aside



STEP 3:

Line up shield on machine so opening is directly over screw hole. Slots must be perpendicular to base.



STEP 4:

Reinsert screws and tighten down with 4mm allen wrench on both sides. Machine is now ready for use.



POWERING MACHINE ON/OFF

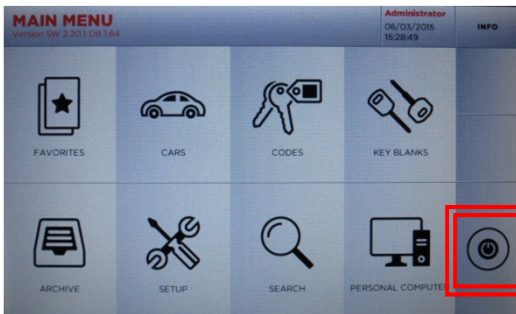
Cable Connection & Powering Machine ON

***MOBILE USERS: YOU MUST USE A PURE SINE WAVE INVERTER WITH 1100 WATTS (or greater) TO POWER THE MACHINE OR MACHINE MOTOR WILL NOT WORK PROPERLY**

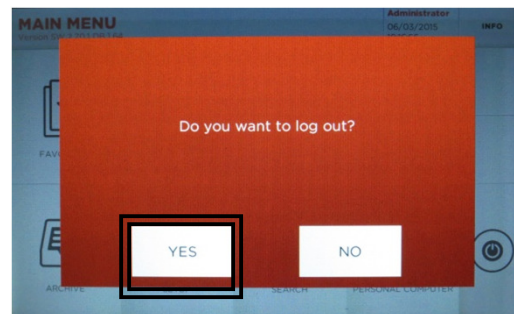
1. Attach the 9-pin connector cable to the port on the **LEFT SIDE** of the console **AND** to the back of the machine. **SECURE WITH ATTACHED SCREWS.** Also, connect the black cable to the console and the back of the machine.
2. Attach power cord to back of machine and plug into a properly grounded outlet.
3. Make sure the ON/OFF button is pressed down and illuminated to RED.
4. Rotate the Emergency Stop button towards the back of the machine until it releases outward. The machine will now begin to start-up. **This process can take up to 4 minutes.** Proceed with **LOGIN** (page 4).



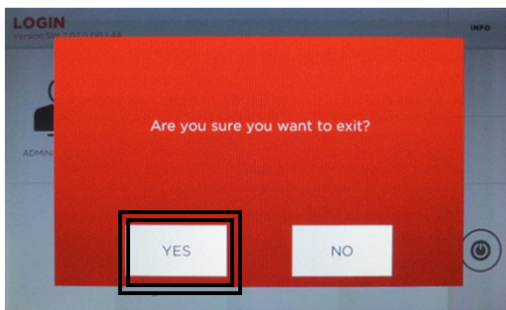
Powering Machine OFF



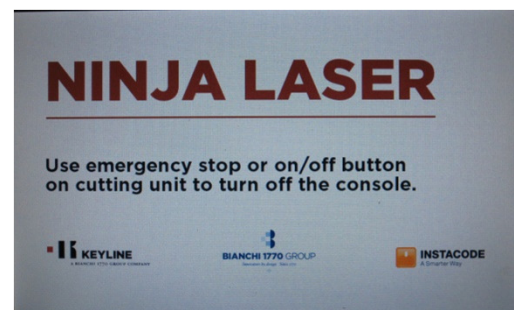
At **MAIN MENU**, select **Power** button



Select **YES** to log out, then select Power button again at Login screen

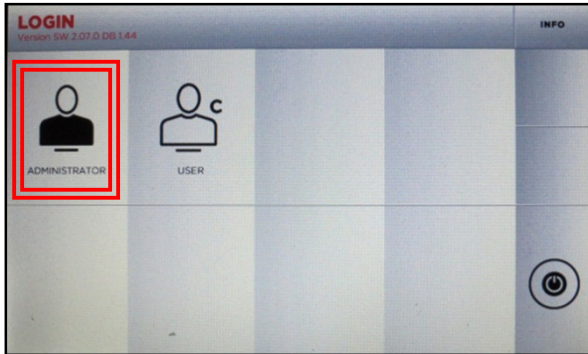


Select **YES** to exit

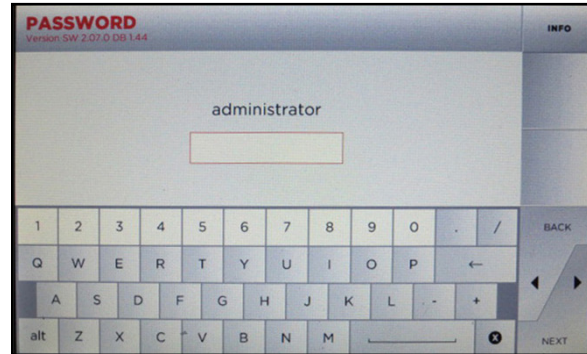


LOGIN / PASSWORD ENTRY

TIP: Use included stylus with touch screen to ensure accurate selections

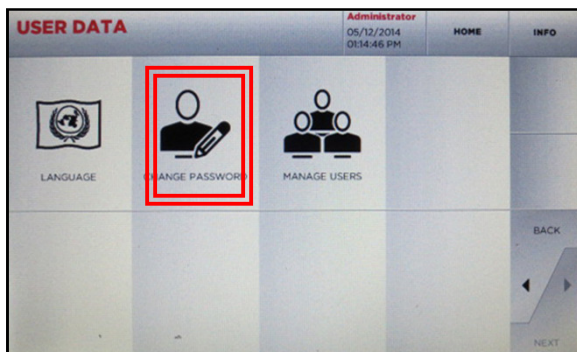
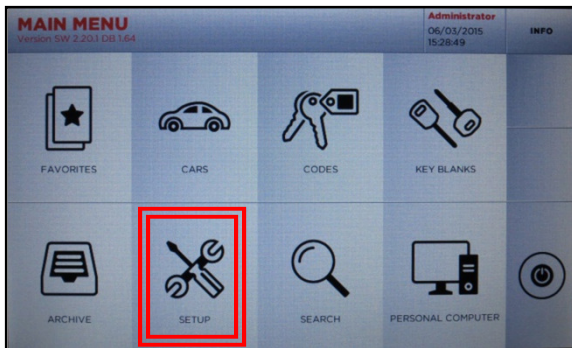


Select **ADMINISTRATOR**



Leave password screen blank, no default password is set, Select **NEXT**. To create password, see below.

PASSWORD CREATION (OPTIONAL) -Skip this section if you do not want a password-



From Main Menu, Select **SETUP**, then **USERS** and then **CHANGE PASSWORD**. At the Change Password screen **enter in your new password and confirm** (leave Old Password line blank) then select **NEXT**. Administrator password is now set.

IMPORTANT

MACHINE CALIBRATIONS

DO NOT CALIBRATE THE JAWS. The Ninja Laser is manufactured to highly precise specifications. Machines and consoles are uniquely paired on initial factory setup. All cutter and jaw calibrations have been performed at the factory matching the jaw to the machine thus making calibrations by the user unnecessary. Consoles and machines cannot be swapped with different versions without consenting Keyline technical team for instructions.

SAFETY SHIELD

The safety shield works in conjunction with the software prompts. If the shield is left open, the software will prompt to close the shield after each selection and may reset to the beginning of the procedure. Make sure to complete all parts of the process (i.e. positioning AC jaw in correct position, securing key on jaw, removing tip stop, etc) at one time, then close the shield before proceeding to next step. This will avoid having to replicate steps.

KEY MATERIAL

The Ninja Laser defaults to cutting brass keys as the key material type. If you are cutting a different type of metal key, such as steel, nickel silver or aluminum, you can make the selection in the cutting screen. Please note the Ninja Laser cannot cut or decode any type of plastic key.



To change the material type, simply touch the BRASS icon on the screen until you reach the desired material; **BRASS**, **STEEL**, **NiSi** (Nickel Silver) or **ALU** (aluminum)

USE OF AFTERMARKET SPARE PARTS

Keyline machines require the use of factory original parts. Aftermarket cutters, tracers and adaptors are not recommended and may cause product damage that will void your machine warranty.

MACHINE PACKAGING

Please retain all machine packaging for transportation purposes. Packaging is specially designed to safely transport the machine and it's components. Keyline is not responsible for providing additional packing material if original boxes are lost, damaged or discarded.

FOLLOW SCREEN PROMPTS

Please thoroughly follow the screen prompts and don't jump ahead

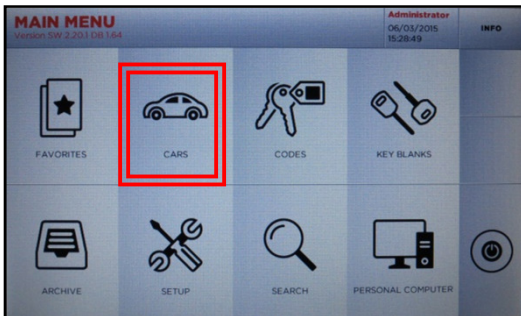
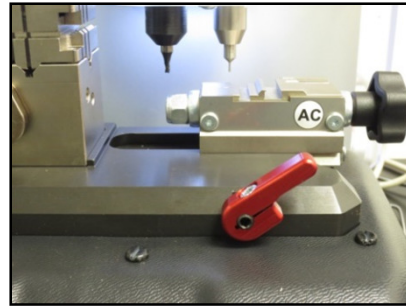
MAINTENANCE

Please keep the machine and work area free of chips and as clean as possible for safety and the best use .

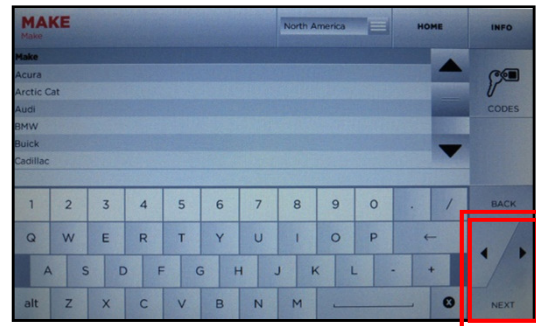
CUT BY DECODE – HIGH SECURITY 6

NOTE: Make sure AC Jaw is in **DECODE** position on jaw carriage as shown in the picture to the right. **Confirm original key is clean and free of dirt, chips, etc.**

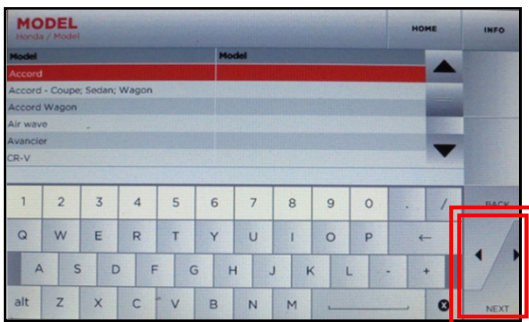
TIP: **DO NOT DECODE PLASTIC KEYS!** Only metal keys can be decoded and cut on the Ninja Laser.



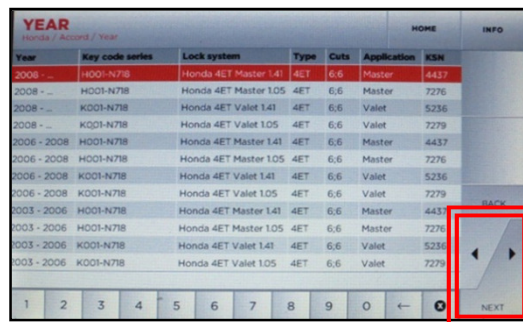
Select **CARS**



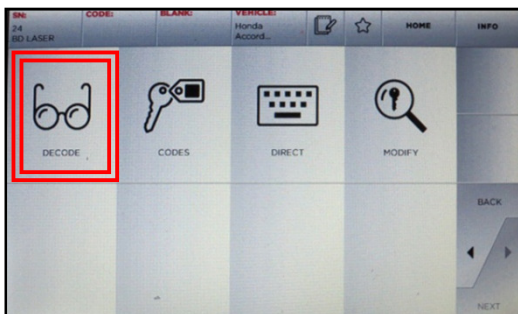
Select **MAKE**, then **NEXT**



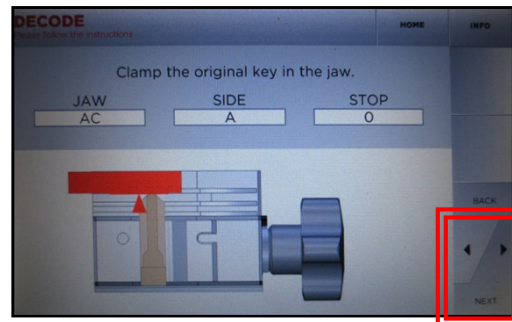
Select **MODEL**, then **NEXT**



Select **YEAR RANGE**, then **NEXT**



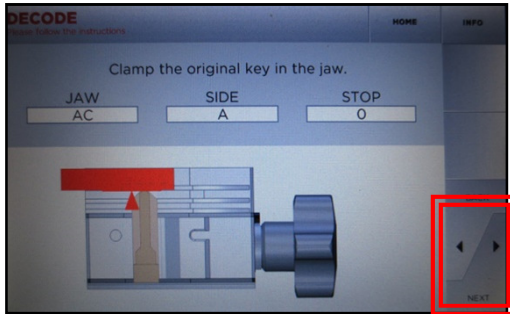
Select **DECODE**, then select **NEXT**



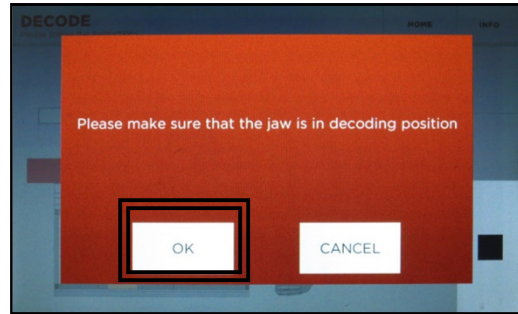
Take note of tip stop location. The red bar indicates position (0 is farthest slot back, then 1, then 2)

CUT BY DECODE – H.S., cont.

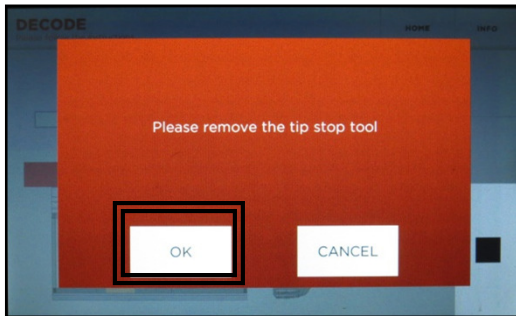
7



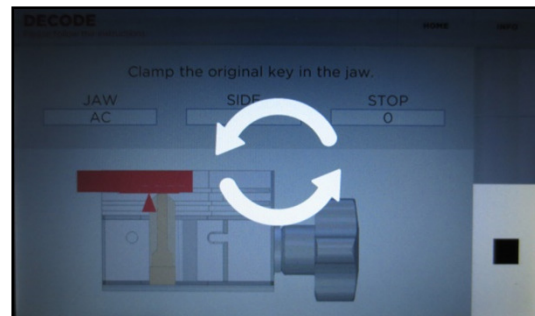
Insert key correctly on jaw, remove tip stop and close shield, select **NEXT**



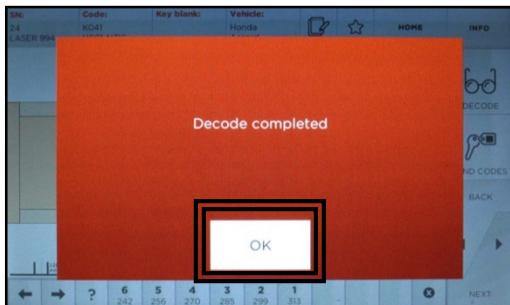
Confirm jaw position, select **OK**



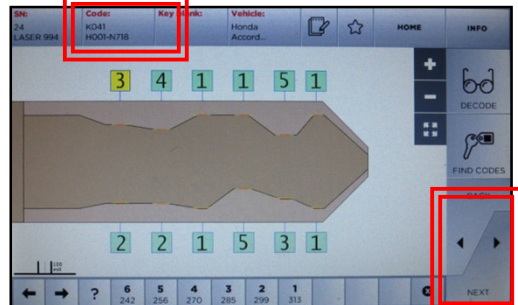
Confirm tip stop tool removal



Decoding in process



Decode complete; Select **OK**



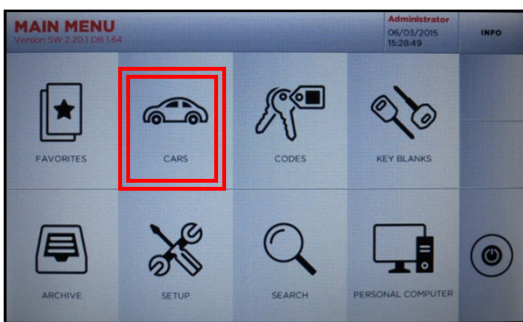
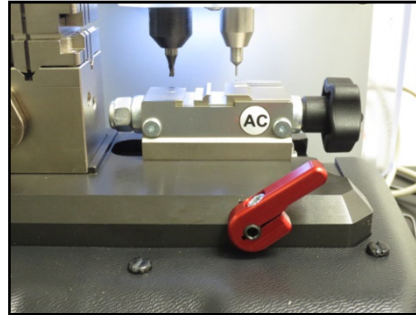
Depths and key code displayed

Select **NEXT**, then proceed with cutting the key by code (refer to **Page 8 – CUT BY CODE-H.S., cont.** to proceed with cutting)

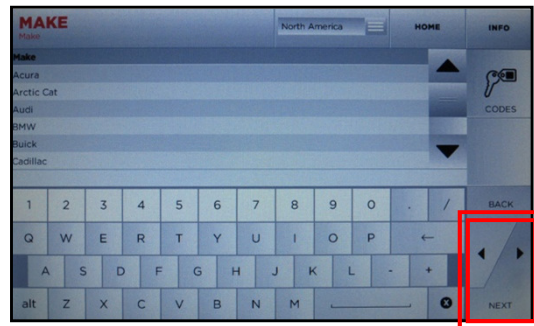
CUT BY CODE – HIGH SECURITY

NOTE: Make sure AC Jaw is in **cutting position** on the jaw carriage as shown in the picture to the right.

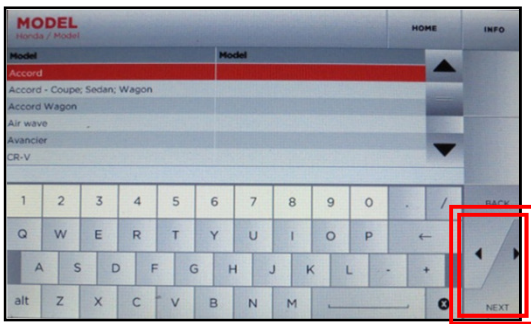
TIP: Cutting a test key is also recommended on first use to verify correct key cutting procedure.



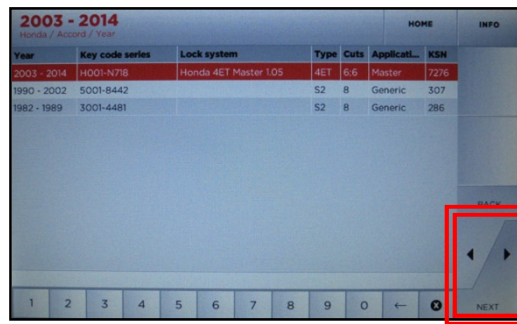
Select **CARS**



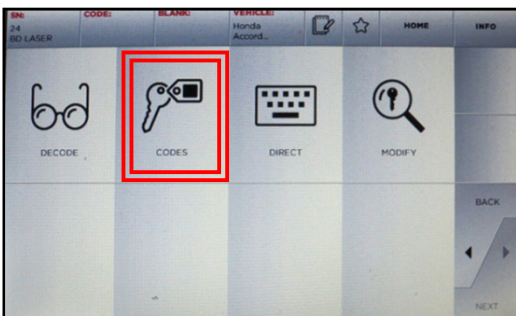
Select **MAKE**, then **NEXT**



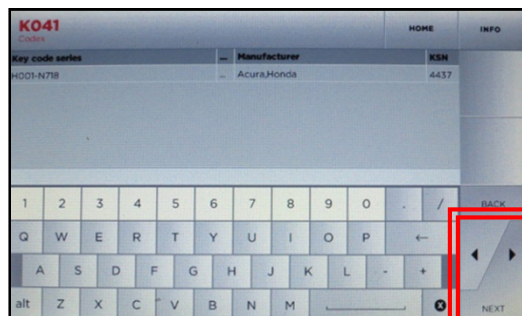
Select **MODEL**, then **NEXT**



Select **YEAR RANGE**, then **NEXT**

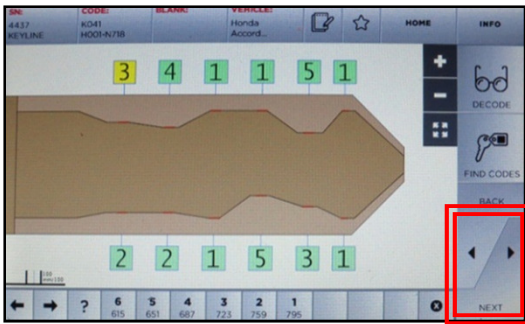


Select **CODES**, then select **NEXT**

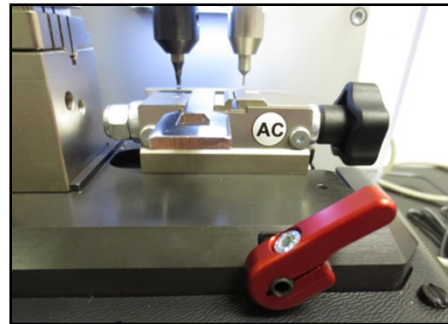


Enter code, (ex. K041), select **NEXT**

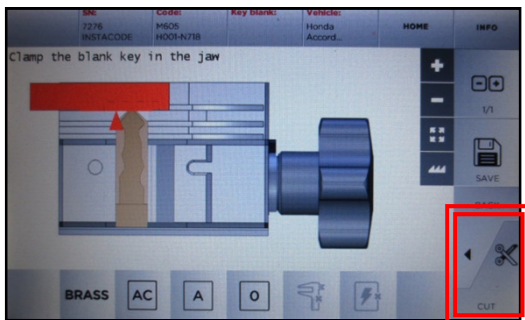
CUT BY CODE – HIGH SECURITY, cont.



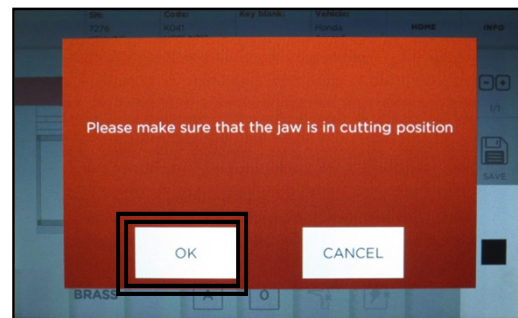
Key depths appear, select **NEXT**



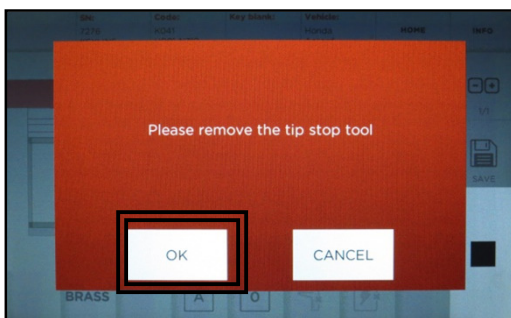
Make sure jaw is in cutting position



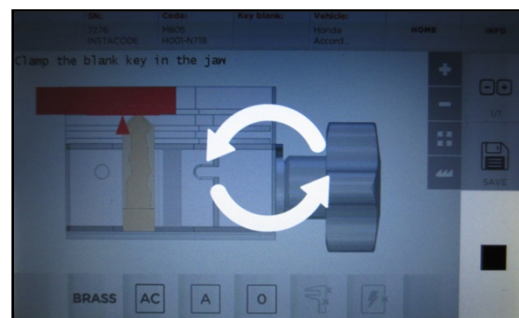
Insert key correctly on jaw, paying close attention to tip stop position (shown in **RED**). Tighten down key, then remove tip stop. **Close shield**. When key is ready, select **CUT**



Confirm jaw placement, select **OK**

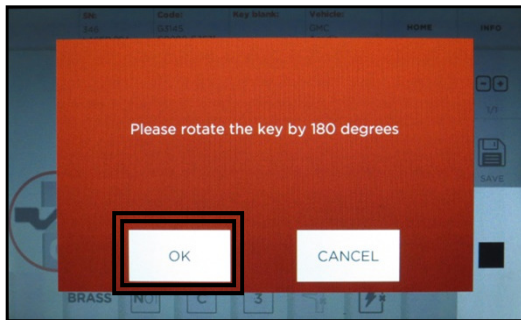


Confirm tip stop removal tip stop, select **OK**

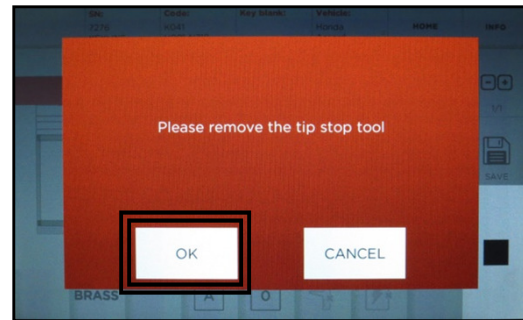


Key cutting begins

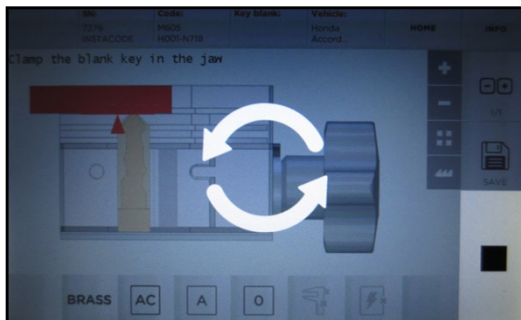
CUT BY CODE – HIGH SECURITY, cont.



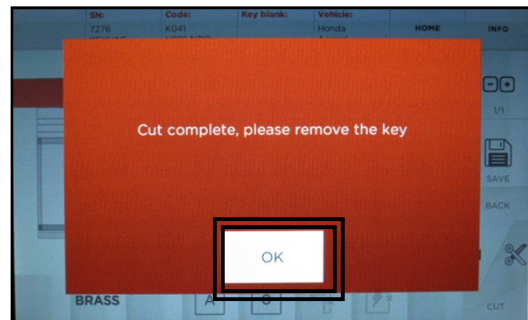
Flip key in jaw, removing key shavings with brush, select **OK**



Confirm removal of tip stop tool, select **OK**



Key cutting begins



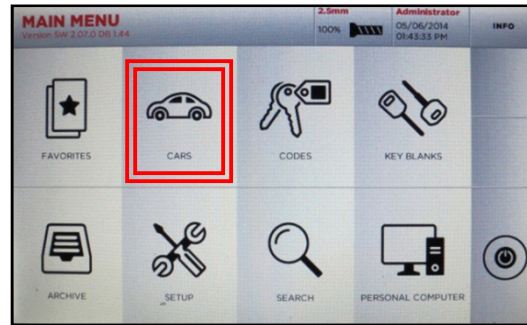
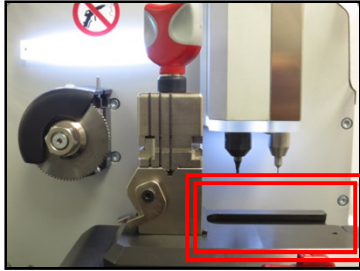
Cut complete

Key cutting complete, select **OK**.

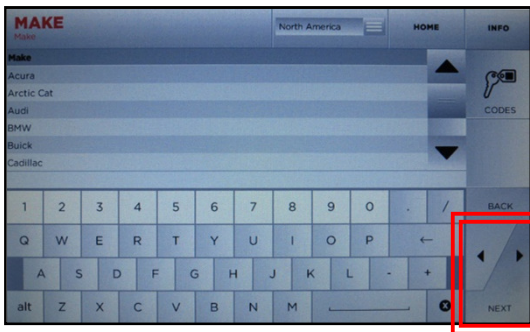
Remove all key shavings from the jaw and select **CUT** to cut additional keys or **HOME** to go back to MAIN MENU.

CUT BY DECODE – EDGE CUT

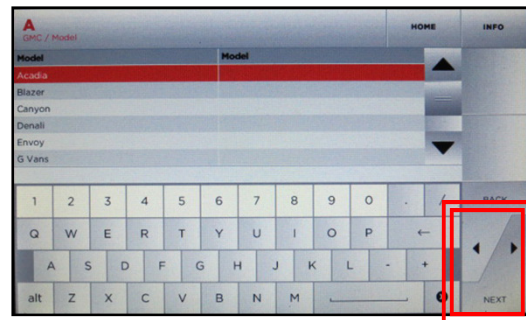
NOTE: When using the edge cut jaw side, the AC jaw (right side) must be removed.



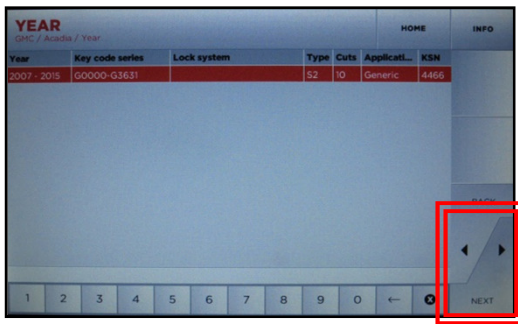
Select **CARS**



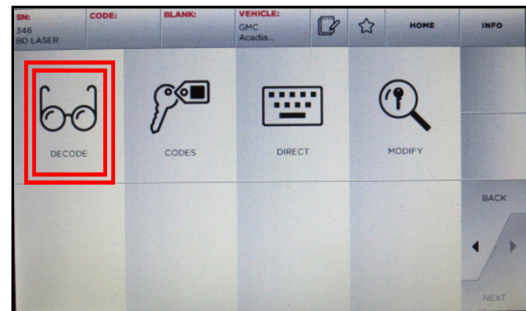
Select **MAKE**



Select **MODEL**



Select **YEAR**



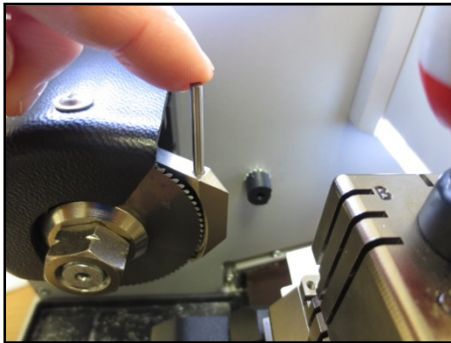
Select **DECODE**



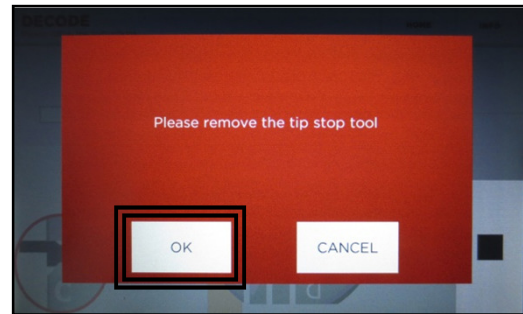
Insert key correctly on jaw, paying close attention to tip stop position (shown in **BLUE**). Slot 4 is all the way on the backside of jaw, slot 3 is below it, then 2, then 1.

Tighten down key, then remove tip stop. **Close shield**. When key is ready, select **CUT**

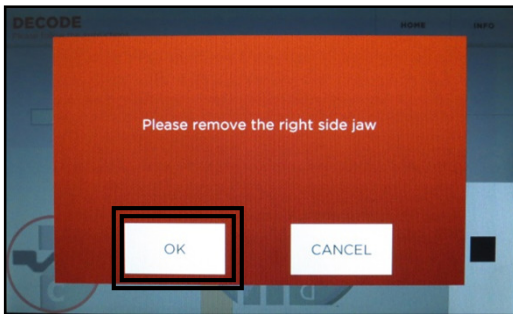
CUT BY DECODE – EDGE CUT, cont.



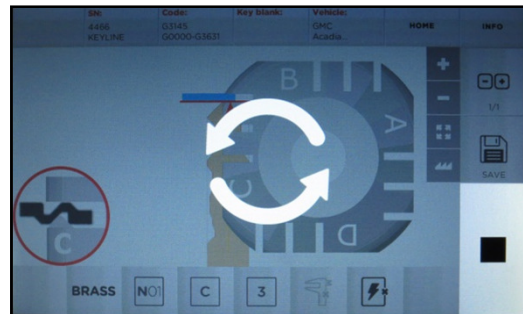
Extract left side tracer as shown



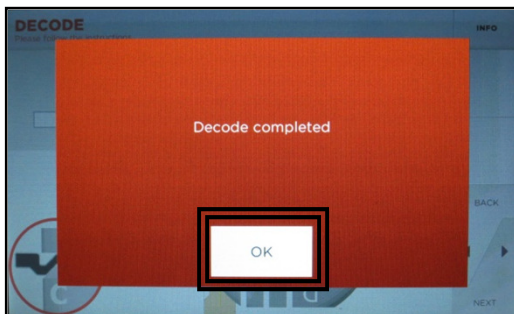
Confirm tip stop removal, select **OK**



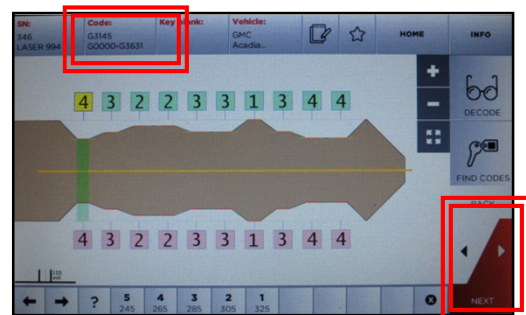
Confirm AC jaw removal, select **OK**



Decoding in process



Decode complete; select **OK**

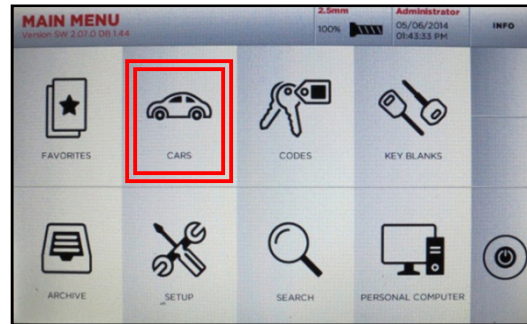
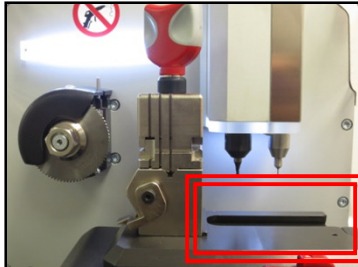


Depths and key code displayed

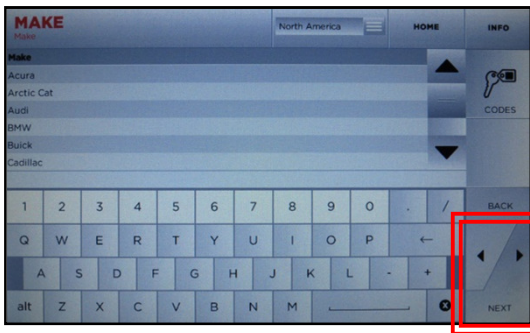
If proceeding to cutting, retract tracer, then select **NEXT** to proceed with cutting the key by code (refer to Page 12 – CUT BY CODE-EDGE CUT).

CUT BY CODE – EDGE CUT

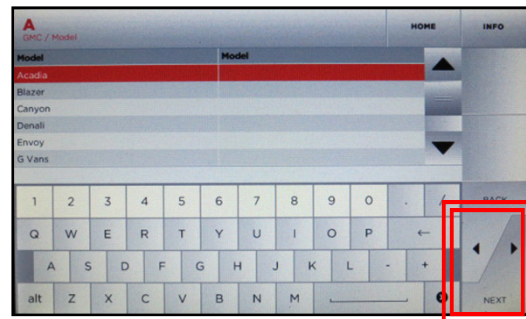
NOTE: When using the edge cut jaw side, the AC jaw (right side) must be removed.



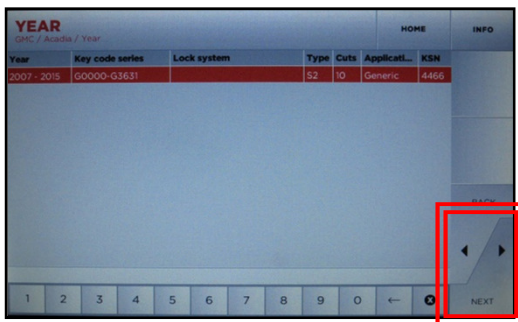
Select **CARS**



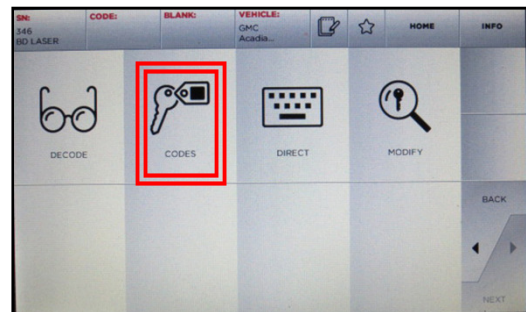
Select **MAKE**



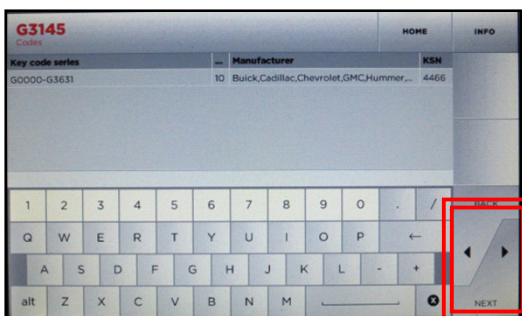
Select **MODEL**



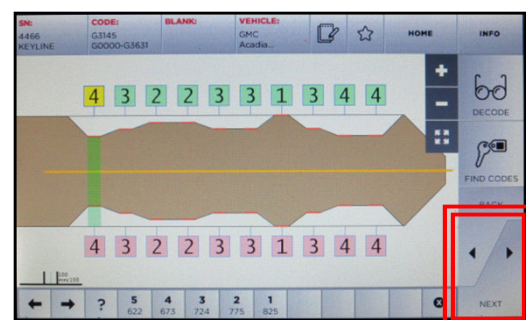
Select **YEAR**



Select **CODES**



Enter code and select **NEXT**



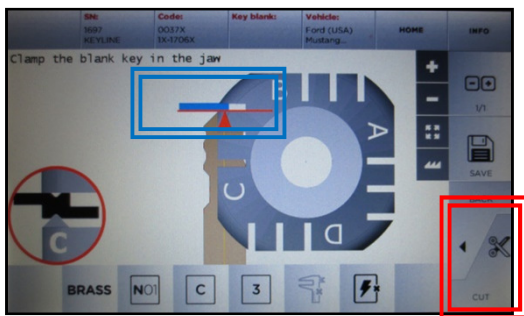
Key depths display, select **NEXT**

CUT BY CODE – EDGE CUT, cont.

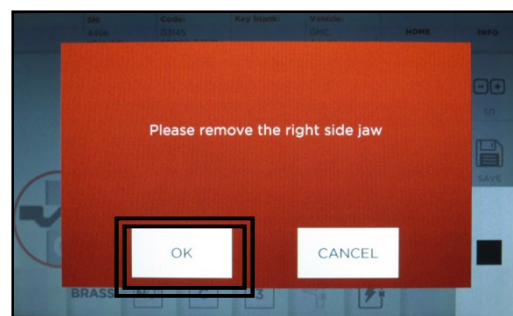
Select the correct jaw side as displayed on screen.

Jaw can be rotated by pulling up on the base of the jaw and rotating to correct side.

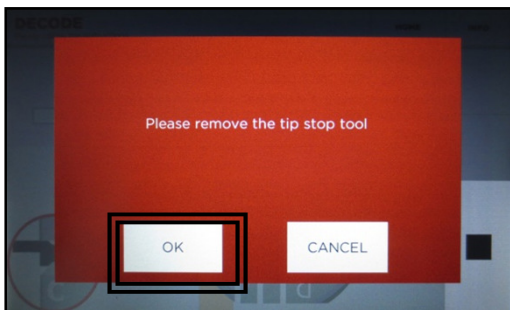
Inset tip stop and insert key to correct position as noted in **BLUE**. Tighten down jaw and remove tip stop. **Close shield.**



Select **CUT** once ready



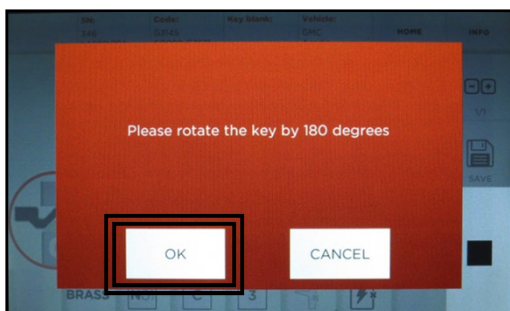
Confirm AC jaw removal



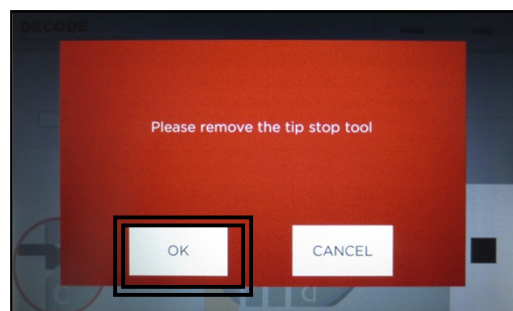
Confirm tip stop removal



Key cutting begins

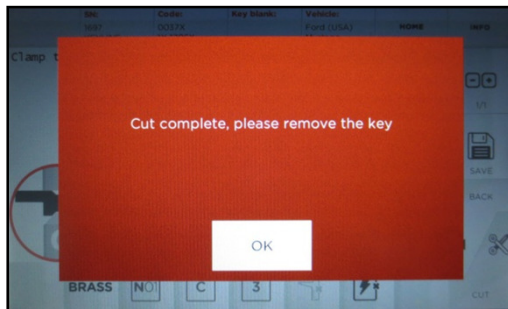


Rotate key and select **OK**

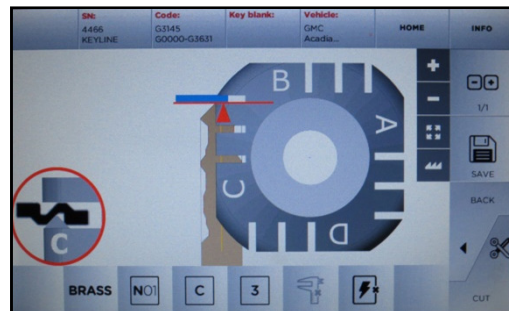


Confirm tip stop removal

CUT BY CODE – EDGE CUT, cont.



Cut complete, select **OK**

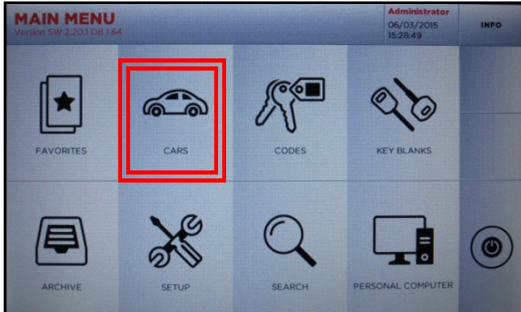


Once key cutting complete, put additional duplicate key to be cut into jaw and select **CUT**.

If done, select **HOME** to go to Main Menu.

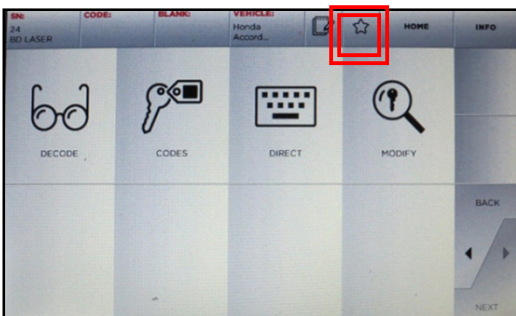
FAVORITES

Selecting Favorites helps bypass Make, Model and Year selections that you most commonly use to get you right to the Code/Decode/Direct screen

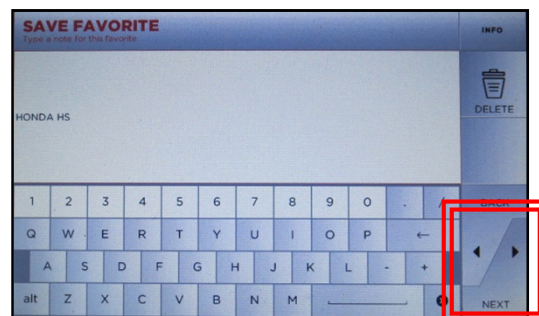


At Main Menu, select Cars

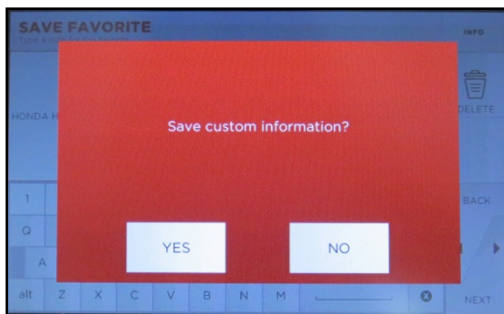
Go through the menu and select the Make, then the Model, then the Year and Code Series range of the vehicle you want to save a favorite for



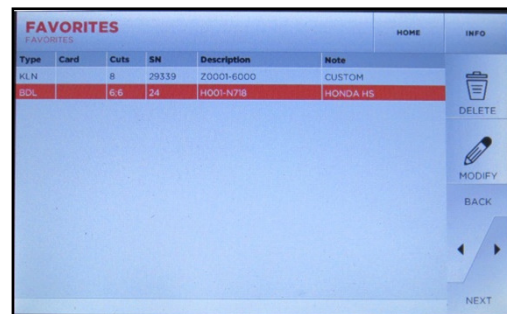
Select the Star icon from the top Menu bar



Enter the text for the Favorite you are adding, then select Next

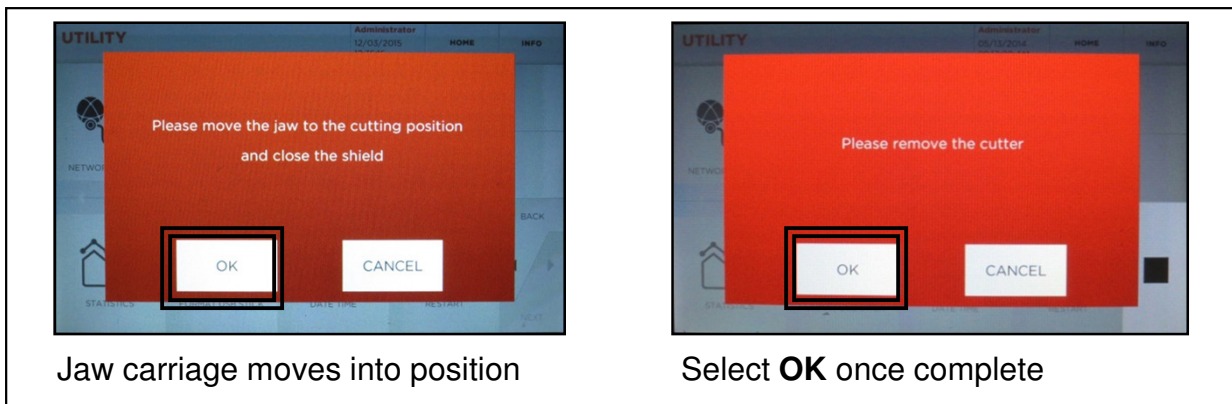
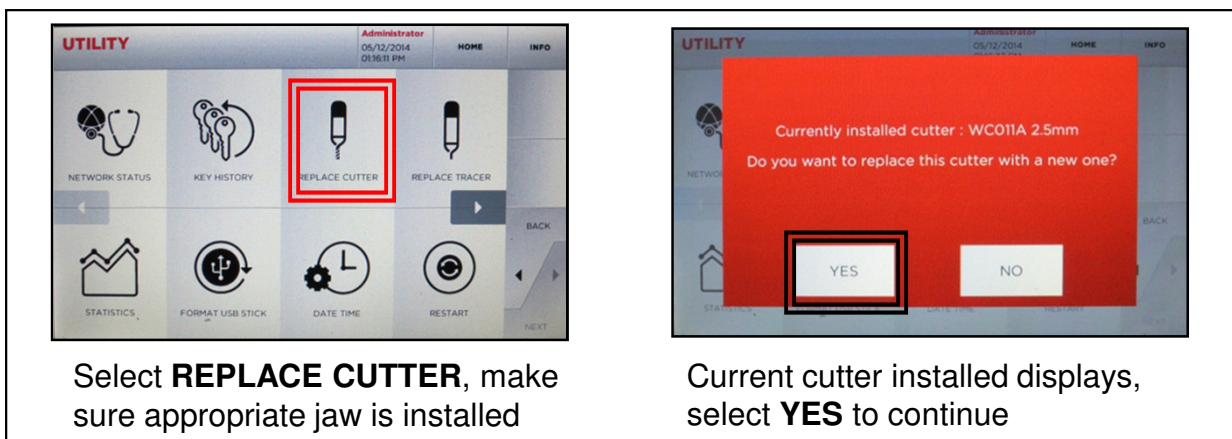
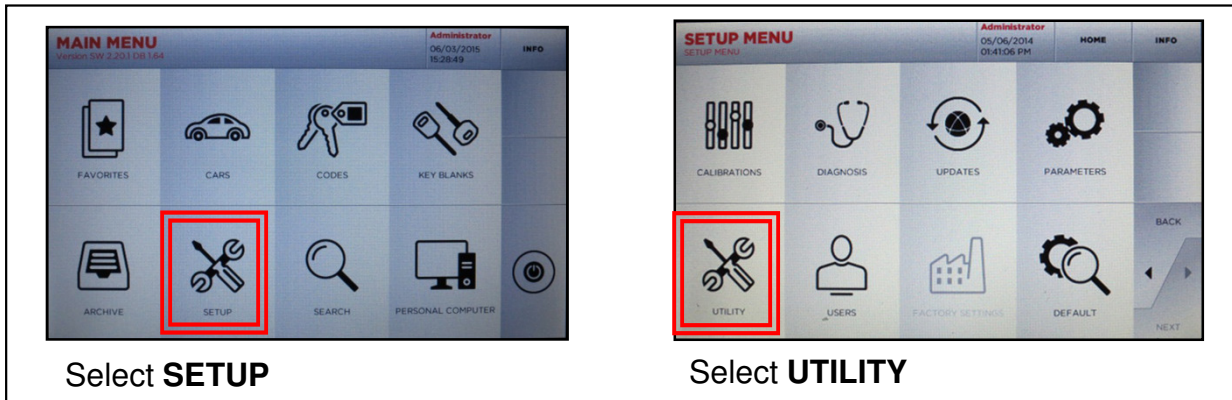


Select YES to save custom info



From the Main Menu select Favorites and the saved favorite will now be listed. This can be selected for future keys to bypass the Make, Model and Year selection and go right to Decode/Codes/Direct menu

CUTTER REPLACEMENT – H.S. 17

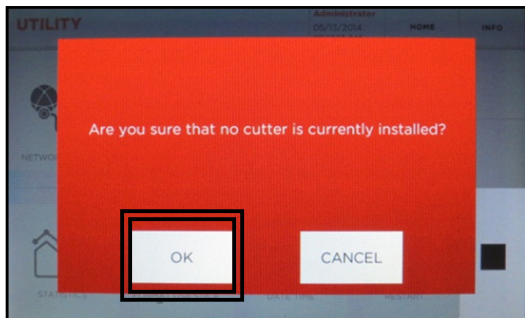


TO REMOVE CUTTER:

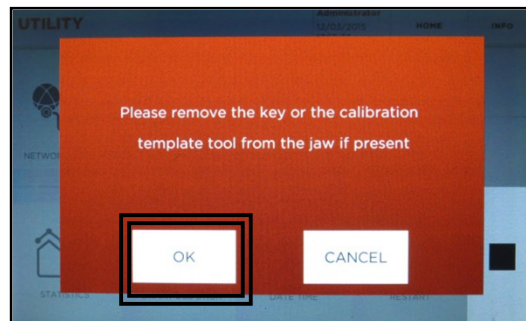
1. Insert red cutter removal tool into slot and rotate until it drops in position.
2. Press down to lock onto cutter.
3. Insert 3mm Allen tool into set screw and once initial release, loosen two complete turns. Remove Allen tool.
4. Remove red rod with cutter attached.
5. Remove old cutter from tool.

AC

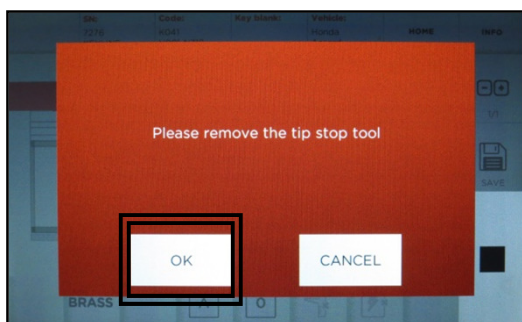
CUTTER REPLACEMENT – H.S., cont.



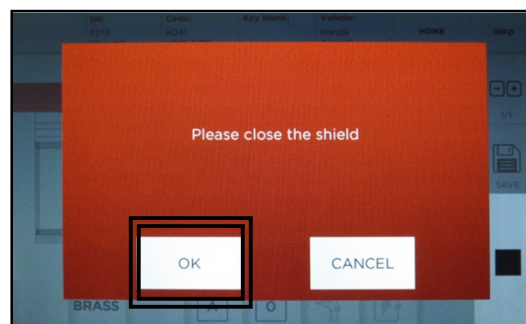
Confirm cutter removal, select **OK**. Jaw will move into position



Confirm no keys or templates are installed on jaw, select **OK**



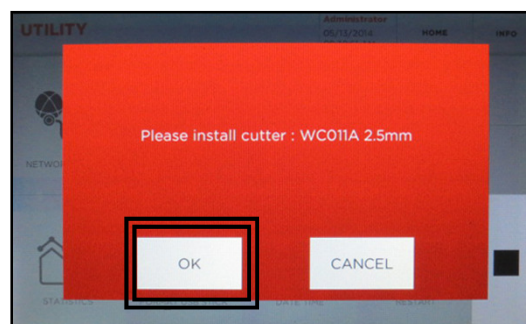
Confirm no tip stop is installed, select **OK**



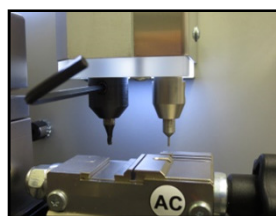
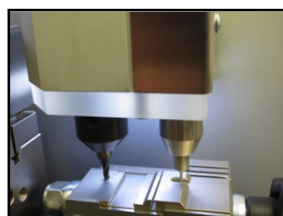
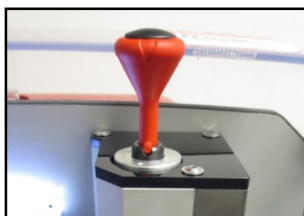
Close the shield and select **OK**. Jaw moves into position

TO INSTALL NEW CUTTER:

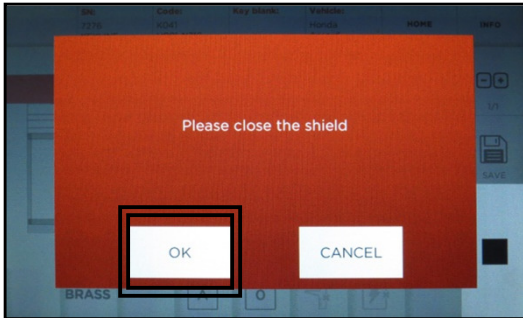
1. Insert new cutter on red tool pressing in until cutter clicks into place.
2. Insert into hole on top of machine
3. Rotate until notch on red tool inserts into slot and cutter rests lightly on the silver dot on the jaw.
4. Tighten set screw with 3mm Allen tool.
5. Remove Allen tool and red tool.



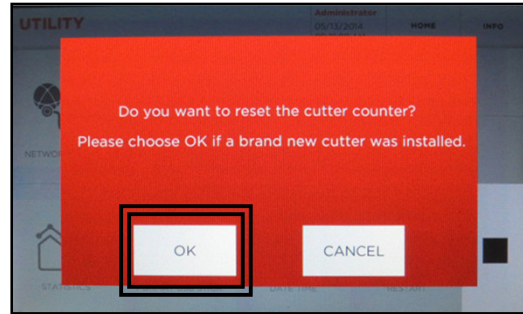
Select **OK** once complete



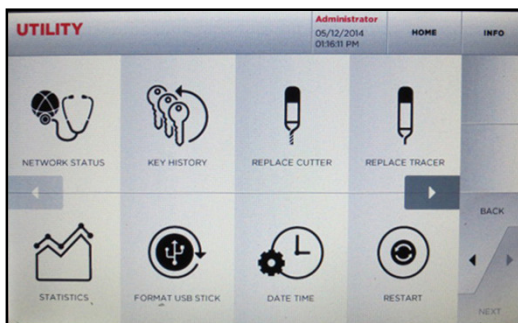
CUTTER REPLACEMENT – H.S., cont.



Close the shield, select **OK**. Jaw will move into position



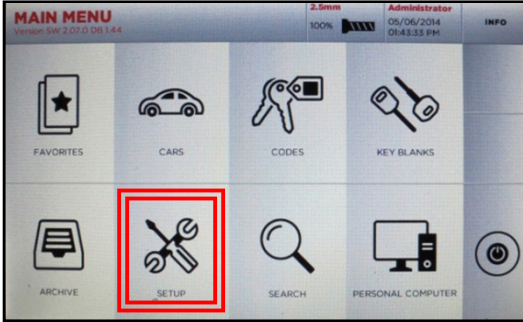
Select **OK** to reset cutter counter



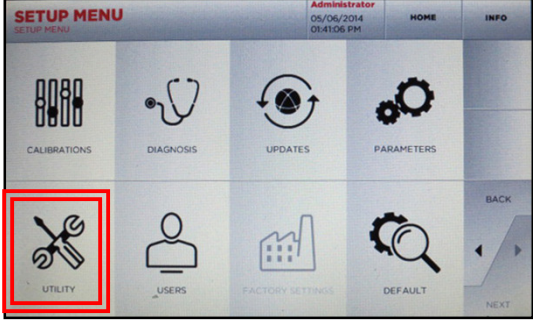
Utility screen appears, select **HOME** to go to Main Menu

TRACER REPLACEMENT

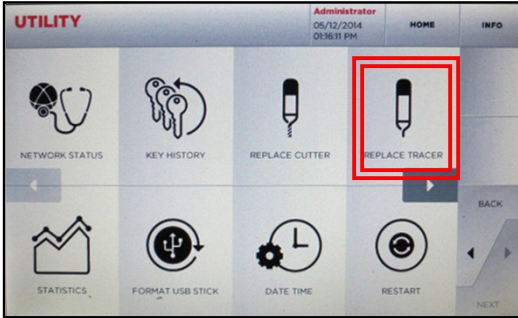
IMPORTANT: Please make sure safety shield is closed before starting initial tracer replacement procedure.



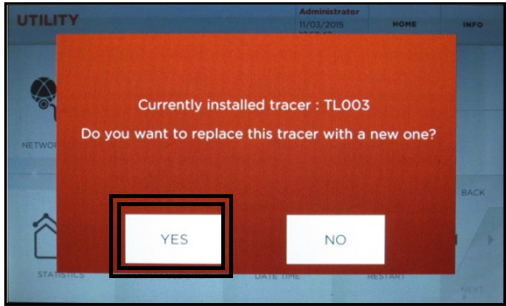
Select **SETUP**



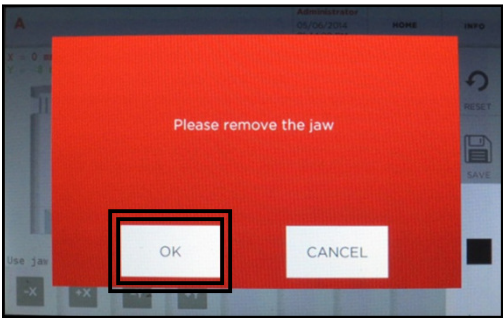
Select **UTILITY**



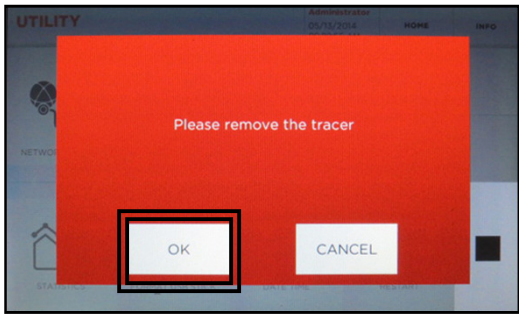
Select **REPLACE TRACER**



Current tracer installed displays, select **YES** to continue

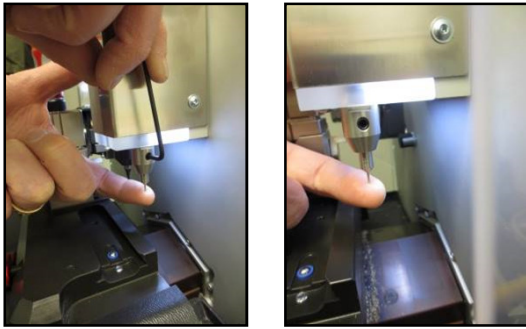


Remove jaw, then select **OK**



Remove tracer; **see instructions on page 23**

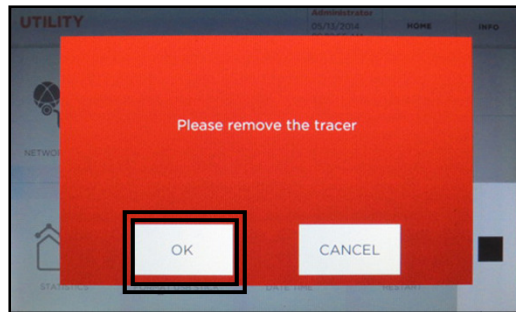
TRACER REPLACEMENT, cont. 21



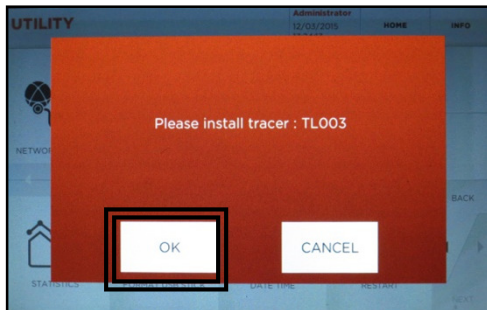
TO REMOVE TRACER:

1. Use 2.5mm Allen tool to loosen tracer setscrew $\frac{1}{2}$ a turn
2. Pull out tracer.

NOTE: You may use pliers to remove tracer if it is bent or broken.

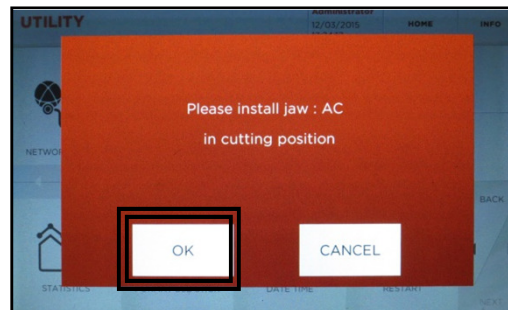
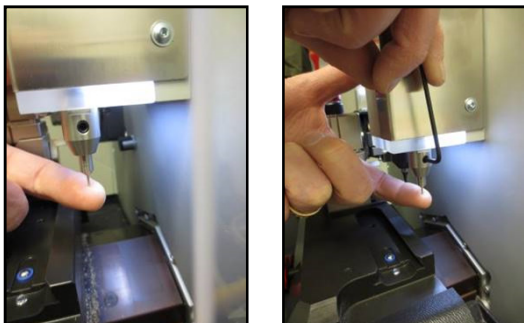
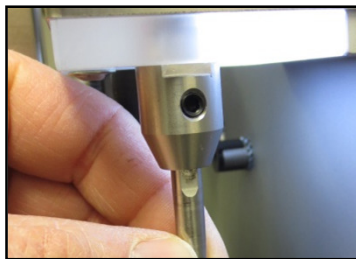


Select **OK** once tracer is removed



TO INSTALL NEW TRACER:

1. Install new tracer as far as it will go – you cannot go too far.
2. Be sure flat side of tracer is facing right to allow the set screw to seat properly.
3. Tighten set screw. **DO NOT OVER TIGHTEN.**
4. Select **OK** once tracer is successfully installed.



Install Jaw AC in cutting position, select **OK**. Utility screen appears, select **HOME** to go to Main Menu.

CUTTER REPLACEMENT – EDGE CUT

22

WHAT YOU NEED:

New replacement cutter (B5500)

2.5mm allen tool (included in tool kit)

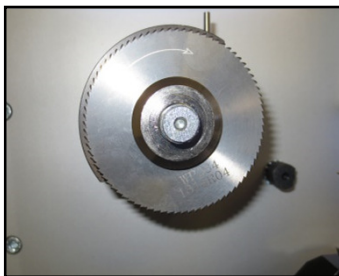
Steel bar (included in tool kit)

19mm open end wrench (included in tool kit)



REMOVE OLD CUTTER:

1. Use 2.5mm allen tool to remove 3 screws that secure black edge cutter cover.
2. Insert steel bar into hole on shield and then through left side of cutter shaft. Rotate the cutter wheel until the steel bar is able to insert all the way through the cutter shaft.
3. Use the 19mm wrench to remove nut. Turn **clockwise** to loosen.
4. Remove silver spacer in front of cutter, then remove the cutter.



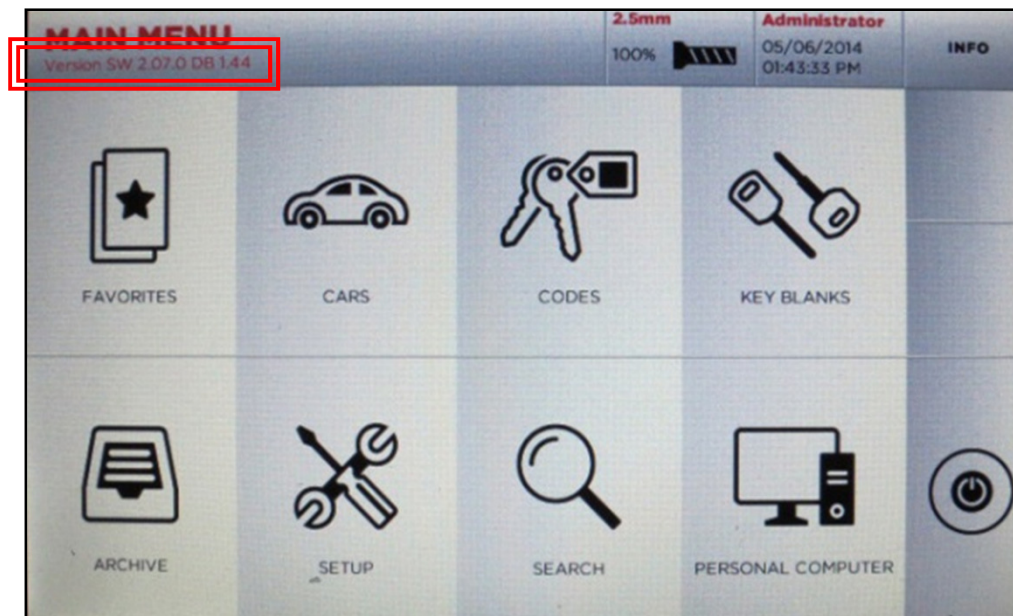
INSTALL NEW CUTTER:

1. Install new cutter onto shaft with part number facing forward, then replace silver spacer and nut. Turn **counterclockwise** to tighten.
2. Remove steel bar, then replace the cover and tighten down screws.
3. Machine is now ready for use.

SOFTWARE UPDATE INSTRUCTIONS

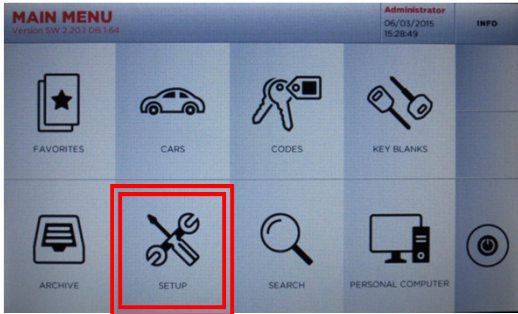
SOFTWARE UPDATE VIA USB MEMORY STICK & KEYONLINE WEBSITE

WHAT YOU WILL NEED:



To check your current software version, see 'Version SW' below the Main Menu tab

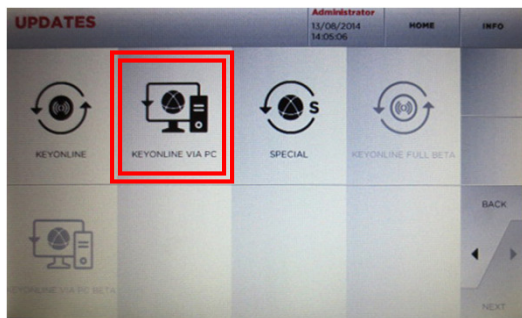
STEP 1: Prepare USB Memory Stick with Update File 24



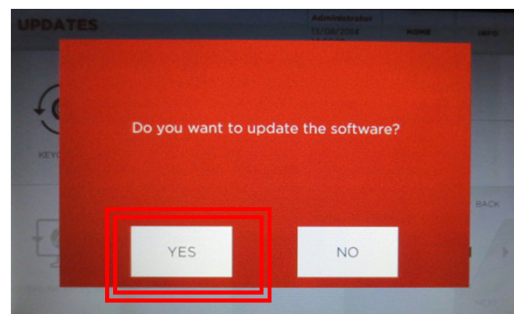
At **MAIN MENU**, select **SETUP**



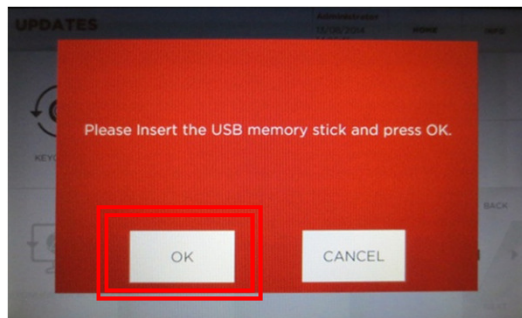
At **SETUP MENU**, select **UPDATES**



Then select **KEYONLINE VIA PC**



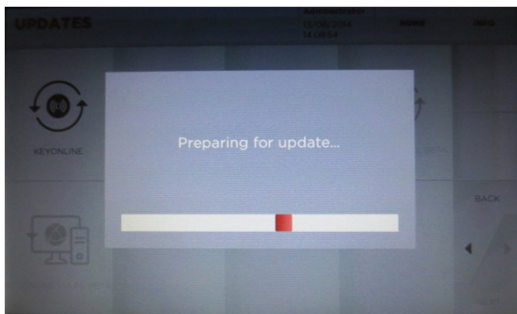
Select **YES** to Software Update



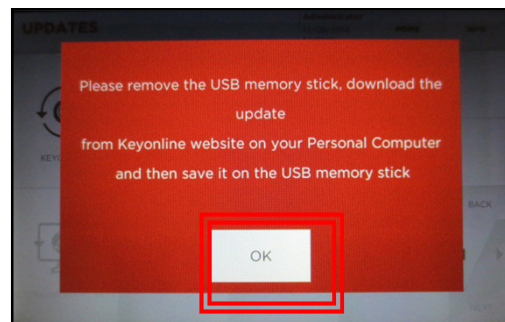
Insert USB Memory Stick, select **OK**



USB stick inserts on right side of console



Console prepares software file

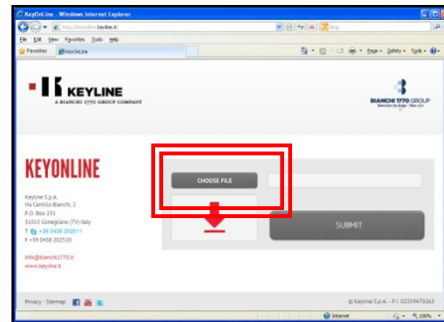


Remove USB stick, Select **OK**

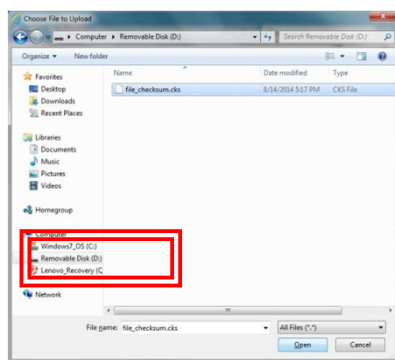
STEP 2: Install Update File on USB from PC



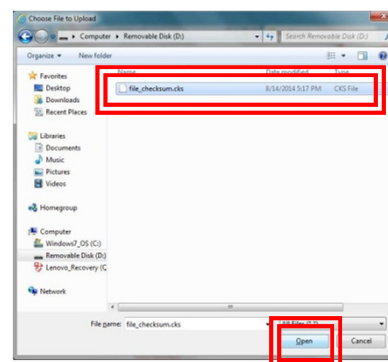
Insert USB stick into USB port on PC then go to <http://keyonline.keyline.it>



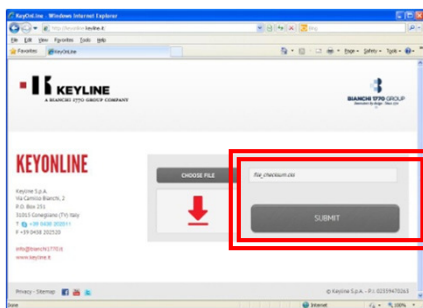
On site, double-click **CHOOSE FILE**



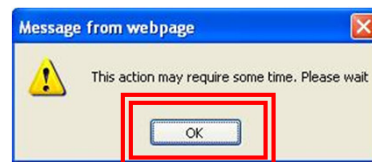
Go to Computer, then double-click **Removable Disk**



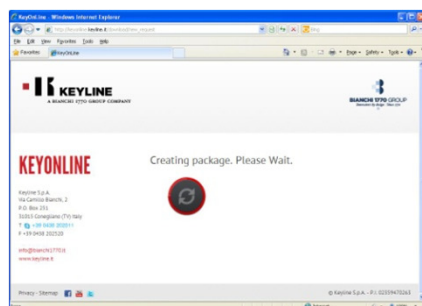
Highlight the '.csk' file listed and click **OPEN**



File now appears in the box on the Keyonline site, click **SUBMIT**

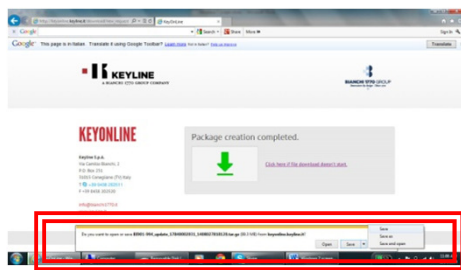


Click **OK** when this screen appears

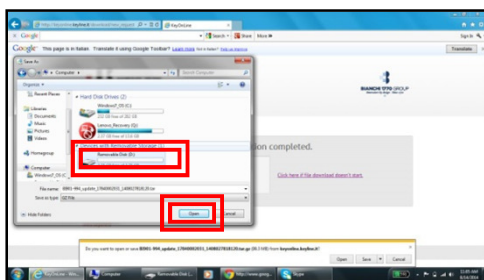


Software package creation will begin. This take up to a few minutes depending on your Internet speed.

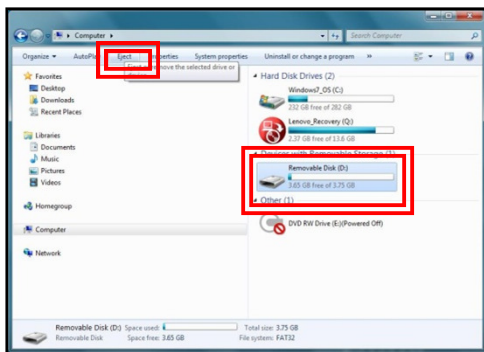
STEP 2, cont: Install Update File on USB from PC



Package creation completed should appear. You will be prompted with a pop up at the bottom of the screen, click on the drop down arrow to the right of 'SAVE' and select 'SAVE AS'



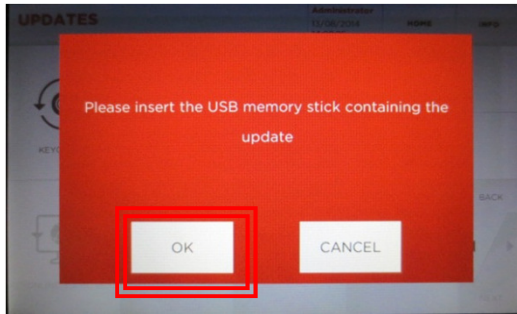
After selecting 'SAVE AS', you will be prompted to select the destination where you want to save the file. Go to Computer, then highlight Removable Disk and select **OPEN**. The file will begin downloading to the Removable Disk (i.e. the USB memory stick). **NOTE:** The file can take up to 45 minutes to download depending on Internet speed and file size.



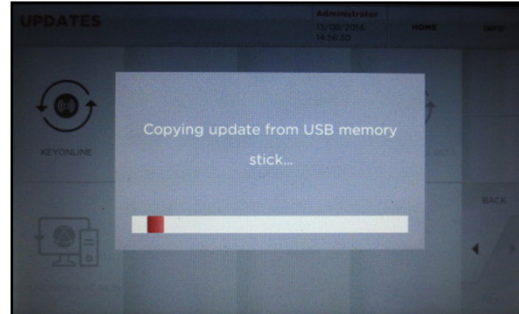
Once the update file has finished installing you may exit the KEYONLINE site and then safely remove the Removable Disk from your drive. To Eject, go to Computer, then highlight Removable Disk and select 'Eject' from the menu bar.

You can now take the USB memory stick back to your console to complete the software update.

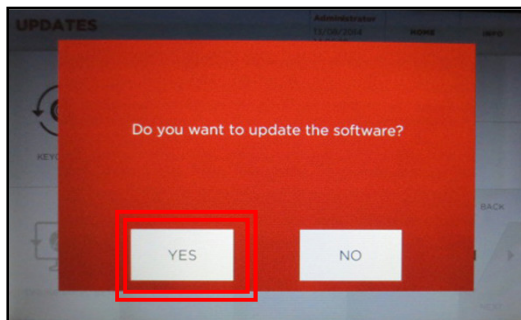
STEP 3: Complete Software Installation on Console 27



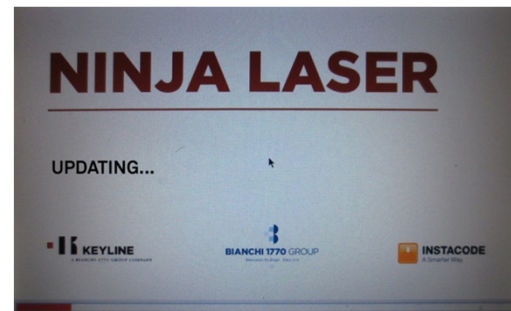
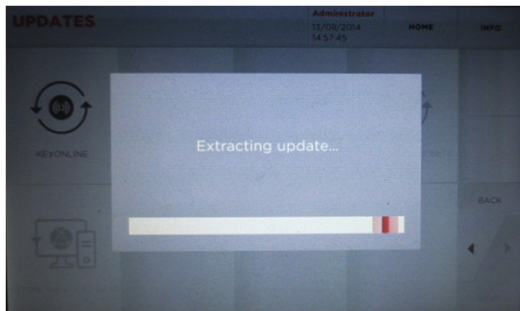
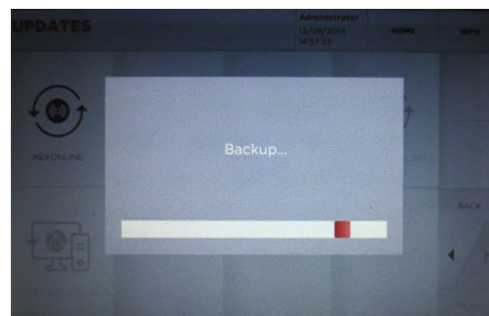
Insert USB into console and select **OK**



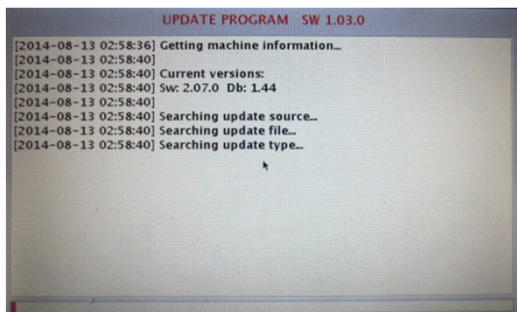
Update begins



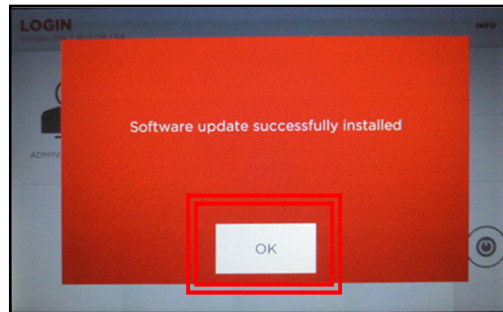
Select **YES** to confirm update



Machine will re-boot and power back up as update continues



Update continues; progress bar on bottom



Update successful; select **OK**

NINJA LASER SPARE PARTS

Description	Part Number	Lawson Part #
Universal 2.5mm cutter (WC011A)	B3320	1438283
63mm Carbide Cutter	B5500	1495430
Universal Tracer (TL003)	RIC09483B	1438306
Magnetic Tip Stop – original	B3405	1495400
High security jaw calibration template	B3354	1495402
"AC" Jaw	OPZ09734B	1495551
3mm T-wrench (Long)	B3316	1519892
B Jaw	OPZ09781B	1495552
D Jaw	OPZ09783B	1495553
Console Arm Support	OPZ09454B	1519894
N01 Calibration Blanks	RIC08842B	1519895
Lexus Adaptor	B3379	1495416
Infiniti Adaptor	B3352	1166835